
Bitrix Intranet Portal

Installation Guide

Preface

This manual is for reading by Bitrix Intranet Portal users. The document covers the following most important key points:

- § installation of the evaluation and commercial versions;
- § installation using Bitrix Environment;
- § registration of your Bitrix Intranet Portal copy at the Bitrix company web site, downloading source codes – operations that are essential to obtain the fully-functional open source system.

This guide provides the detailed solutions of various problems that you may encounter during the system installation on a local machine. If you confront difficulties installing Bitrix Intranet Portal on a remote server, you will find the solution in the [Installing and configuring Bitrix Site Manager](#) training course.

Should you have any questions installing the system, you can always ask them at the [technical support service](#).

Note! This guide uses the terms “site” and “portal” as synonyms.

Chapter 1. Installing Bitrix Intranet Portal

All versions of Bitrix Intranet Portal are shipped as **.zip** and **.tar.gz** archive files for **PHP 4** and **PHP 5**. Please note that you have to choose the correct version to match your web server.

- q Download Bitrix Intranet Portal installation package to your server or computer.
- q Extract files from the archive to the root folder of your site. The unpacked files require approx. 100 MB of disk space. Also, remember to add for the size of the downloaded archive file.

Your system should meet the following minimum requirements to install and run Bitrix Environment:

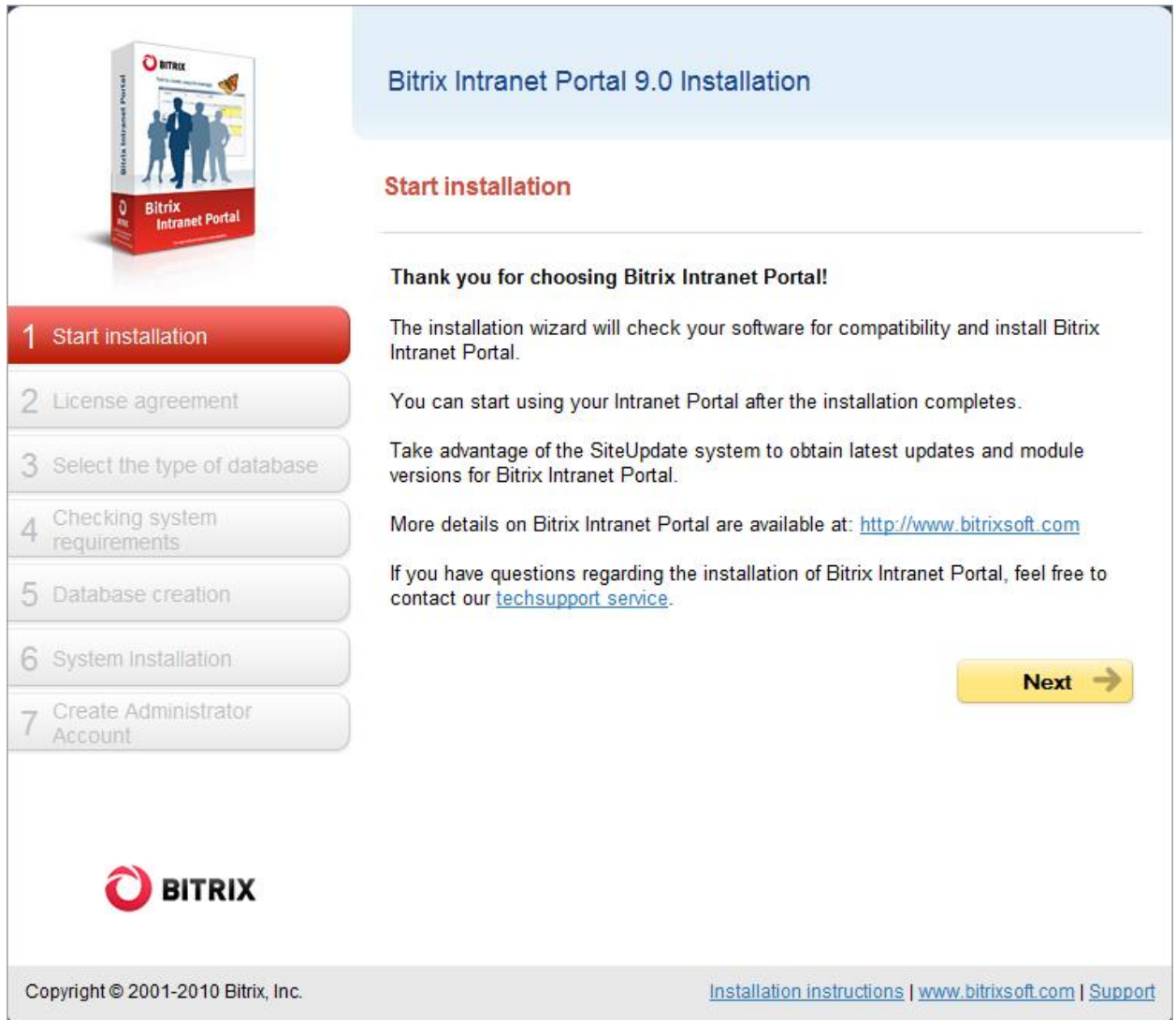
1. If required, install Apache web server and configure it to support PHP. Bitrix Intranet Portal requires Apache version 1.3 or better and PHP 4.3.9 or better.
2. If required, install database engine (**MySQL** version 4.1.11 or higher, **Oracle** 10g or higher or **MSSQL** 2000 or higher).
3. If you install a trial or encoded version, install and configure free **Zend Optimizer** version 3.3.0 or better.
4. If you install an **Oracle** version, ensure that a client part version 9 or better exist. Create a new user.
5. If you reinstall the system, remember to remove all tables.
6. Ensure that you have at least 10 MB of free disk space for the update system.

To start installation:

- q Open **http://<your_site>/index.php** in your browser, replace here **<your_site>** with the real address of your site.
- q Follow the **Installation Wizard** instructions.

Step 1. The Initial Installation Screen

The first wizard window informs you that the installation is starting and displays the basic information about the product.



Bitrix Intranet Portal 9.0 Installation

Start installation

1 Start installation

2 License agreement

3 Select the type of database

4 Checking system requirements

5 Database creation

6 System Installation

7 Create Administrator Account

Thank you for choosing Bitrix Intranet Portal!

The installation wizard will check your software for compatibility and install Bitrix Intranet Portal.

You can start using your Intranet Portal after the installation completes.

Take advantage of the SiteUpdate system to obtain latest updates and module versions for Bitrix Intranet Portal.

More details on Bitrix Intranet Portal are available at: <http://www.bitrixsoft.com>

If you have questions regarding the installation of Bitrix Intranet Portal, feel free to contact our [techsupport service](#).

Next →

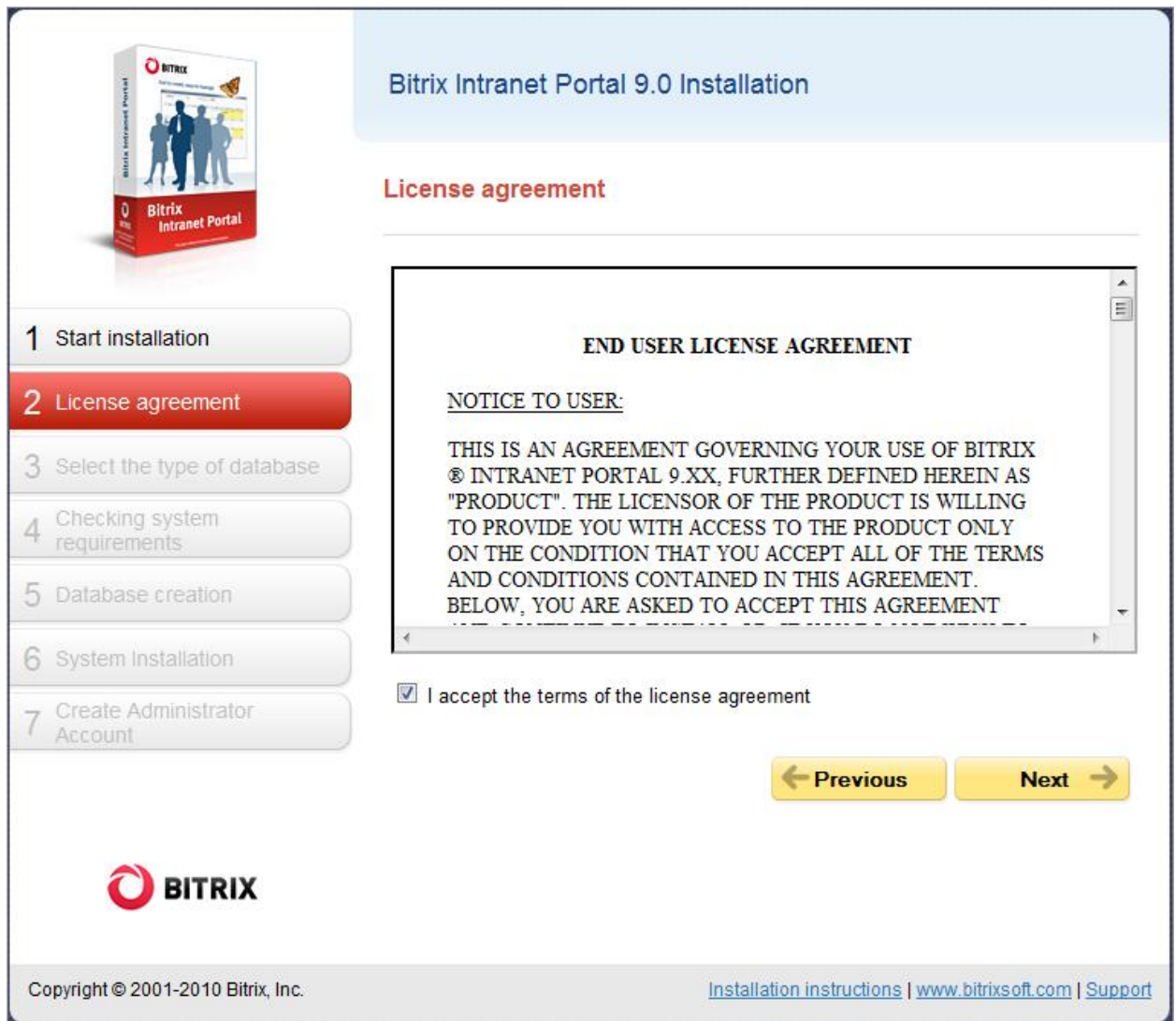
BITRIX

Copyright © 2001-2010 Bitrix, Inc. [Installation instructions](#) | www.bitrixsoft.com | [Support](#)

Fig. 1.1 The first step of the installation wizard

q Click **Next** to continue installation.

Step 2. The License Agreement



The screenshot displays the Bitrix Intranet Portal 9.0 installation wizard. On the left, a vertical list of steps is shown, with '2 License agreement' highlighted in red. The main area features a 'License agreement' section with a scrollable text box containing the 'END USER LICENSE AGREEMENT'. The text in the box reads: 'NOTICE TO USER: THIS IS AN AGREEMENT GOVERNING YOUR USE OF BITRIX ® INTRANET PORTAL 9.XX, FURTHER DEFINED HEREIN AS "PRODUCT". THE LICENSOR OF THE PRODUCT IS WILLING TO PROVIDE YOU WITH ACCESS TO THE PRODUCT ONLY ON THE CONDITION THAT YOU ACCEPT ALL OF THE TERMS AND CONDITIONS CONTAINED IN THIS AGREEMENT. BELOW, YOU ARE ASKED TO ACCEPT THIS AGREEMENT'. Below the text box is a checked checkbox labeled 'I accept the terms of the license agreement'. At the bottom right, there are 'Previous' and 'Next' navigation buttons. The Bitrix logo is at the bottom left, and copyright information and links are at the bottom.

Bitrix Intranet Portal 9.0 Installation

License agreement

1 Start installation

2 License agreement

3 Select the type of database

4 Checking system requirements

5 Database creation

6 System installation

7 Create Administrator Account


END USER LICENSE AGREEMENT

NOTICE TO USER:

THIS IS AN AGREEMENT GOVERNING YOUR USE OF BITRIX ® INTRANET PORTAL 9.XX, FURTHER DEFINED HEREIN AS "PRODUCT". THE LICENSOR OF THE PRODUCT IS WILLING TO PROVIDE YOU WITH ACCESS TO THE PRODUCT ONLY ON THE CONDITION THAT YOU ACCEPT ALL OF THE TERMS AND CONDITIONS CONTAINED IN THIS AGREEMENT. BELOW, YOU ARE ASKED TO ACCEPT THIS AGREEMENT

I accept the terms of the license agreement

← Previous Next →



Copyright © 2001-2010 Bitrix, Inc. [Installation instructions](#) | www.bitrixsoft.com | [Support](#)

Fig. 1.2 The License Agreement

- q Read the Agreement carefully. If you accept the license terms, check the **I accept the terms of the license agreement** box. You must accept the License Agreement to continue installation.
- q Click **Next** to open the next window of the wizard.

Step 3. License Key

Here you will have to enter your license key and select database for which the system will be configured.

License Key	
* License key:	<input type="text" value="DEMO"/> If you have purchased the system, please enter the license key that you have received by e-mail. If you intend to install the product for evaluation purposes, please leave the value DEMO.
Select the type of database	
* Database: Database to be installed	<input checked="" type="radio"/> MySQL <input type="radio"/> Oracle <input type="radio"/> Microsoft SQL Server The type of database that you select must conform with the type of your license key. Selecting wrong database type violates the license agreement and may result in partial or full malfunction of the site. If you install the trial version of the product (the DEMO key), you can choose any type of database.
UTF-8 Installation of Bitrix Site Manager	
	<input checked="" type="checkbox"/> Install with UTF-8 encoding

Fig. 1.3 License key and database

- q **License Key** field: if you have already purchased a license, enter the license key here. If you install the product for evaluation purposes, leave the default field value (DEMO).
- q **Choose database** field: select here the database you want to support. If you install the trial version, you can choose any database.

Attention!

The MSSQL database type will be available if only ODBC is supported by your system. Oracle databases require the OCI8 library (the file php_oci8.dll) to be installed. If your system does not meet these conditions, the MSSQL and/or Oracle database types will not be available.

Oracle and MySQL databases can be installed in UTF-8 encoding. If you choose to install UTF-8 version, mark the **UTF-8 Installation** option.

However, selecting UTF encoding requires the **mbstring** PHP module to be installed. And you must check PHP settings:

§ in the file **php.ini**:

php.ini

```
mbstring.func_overload=2  
mbstring.internal_encoding=UTF-8
```

or

§ in the file **.htaccess**:

```
.htaccess  
php_value mbstring.func_overload 2  
php_value mbstring.internal_encoding UTF-8
```

q Click **Next** to continue.

Step 4. Preliminary Verification

The installation wizard checks your system for minimum requirements and displays advices on how to tune your system for optimum performance.

Checking system requirements

Required system parameters

Your system must meet the mandatory conditions. If any parameter displays in red, you have to check and fix it. Otherwise, proper functioning of the site is not guaranteed.

Parameter	Required	Current value
Web server version Apache	1.3 and higher	2.2.8
PHP version	4.3.9 and higher	5.2.6
PHP settings:		
- allow_call_time_pass_reference	On	On
- safe mode	Off	Off
Required PHP modules:		
- MySQL functions	Set	Set
- Regular Expression support (POSIX)	Set	Set
- Regular Expression support (Perl-Compatible)	Set	Set
For installation with UTF-8 encoding		
- Multibyte String	Set	Set
- mbstring.func_overload	>=2	2
- mbstring.internal_encoding	UTF-8	UTF-8

Checking the disk access

The site scripts must have write access to site files. This is required for proper functioning of the file manager, file upload and the update system that is used to keep the site kernel up-to-date.

Parameter	Value
Public section <i>C:/Program Files/Bitrix Environment/www</i>	Accessible for reading and writing
Site kernel <i>C:/Program Files/Bitrix Environment/www/bitrix</i>	Accessible for reading and writing
File <i>C:/Program Files/Bitrix Environment/www/index.php</i>	Accessible for reading and writing
Folder <i>C:/Program Files/Bitrix Environment/www/bitrix/modules</i>	Accessible for reading and writing

Fig. 1.4 Checking the system for minimum requirements

If your system does not match minimum requirements, the problem description in red will display on the top of the screen. The detailed description of the incompatibility can be found in the page body. You cannot continue installation until you fix the problem.

Recommended settings

These parameters are required to be set to their proper values to ensure your site is fully compatible with requirements.

Your site will be up and working even if some settings are incorrect. But if this is the case, some of the site features may become inaccessible.

Parameter	Recommended	Current value
Processing .htaccess	Enabled	Enabled
Site available disk space	more than 50 MB	74466.1 Mb
Recommended settings for PHP:		
- available memory	more than 32 MB, 64 Mb or more recommended	128 Mb
- allow file upload (file_uploads)	On	On
- show errors (display_errors)	On	On
Recommended PHP modules:		
- Zlib Compression	Set	Set
- GD Library (graphic library)	Set	Set
- Free Type Library	Set	Set

Fig. 1.5 Recommended settings

If your system does not match the recommended settings, you *can* still proceed with the installation. The installer will show the potentially incorrect settings. However, it is strongly recommended that you bring these settings into line with the recommended values. You can verify the system preferences in the **Site Check** form in Control Panel.

q Click **Next** to continue.

Step 5. Database Creation

Here the license file and the database connection configuration file are created; the database is populated with data.

The fields in the **Database parameters** group vary depending on the chosen database type. Other fields are common to all databases.

MySQL database parameters

Database settings	
* Server:	<input type="text" value="localhost"/> Server where database system is working
Create user to connect to database	<input checked="" type="radio"/> Existing user <input type="radio"/> New user
* User name:	<input type="text"/> Login to connect to database
Password:	<input type="text"/> Password to connect to database
Create database:	<input checked="" type="radio"/> Existing <input type="radio"/> New
*Existing database:	<input type="text" value="sitemanager"/> Database name where Bitrix will be installed
Database tables type:	<input type="text" value="standard"/>

Fig. 1.6 MySQL configuration parameters

If you install Bitrix Intranet Portal on a local machine and have the required applications (**Apache**, **PHP**, **MySQL**, **Zend Optimizer** for the trial versions), or Bitrix Web Environment installed:

- § **Server:** the address of a server that hosts the database engine (**MySQL** in this case). This value is usually "localhost" for local servers, and the port number in the format **localhost:[port]**. You can find the port number in the **MySQL** configuration files.

Important! When installing Bitrix Intranet Portal with Bitrix Web Environment, type **localhost:31006** in this field.

Database settings	
* Server:	<input type="text" value="localhost:31006"/> Server where database system is working
Create user to connect to database	<input type="radio"/> Existing user <input checked="" type="radio"/> New user
* User name:	<input type="text" value="user"/> Login to connect to database
Password:	<input type="password" value="••••••"/> Password to connect to database
Create database:	<input type="radio"/> Existing <input checked="" type="radio"/> New
*Existing database:	<input type="text" value="intranet"/> Database name where Bitrix will be installed
Database tables type:	<input type="text" value="standard"/>
Database administrator parameters	
* Admin:	<input type="text" value="root"/> Username of databases admin
Admin password:	<input type="password"/> Password of databases admin

Fig. 1.7 Database settings

- § **Database user:** select to create a new user;
- § **User name:** type here any desired database user name (login) that will be used to access the database.
- § **Password:** the database user password.
- § **Database:** select to create a new database. A new group of fields will appear: **Database administrator parameters.**
- § **Database name:** the name of the database to which the product will be installed. This can be any text in Latin letters.
- § **Type of database tables:** standard tables are generally good for most use cases.
- § Select **Create new database.** A new group of fields will appear: **Database administrator parameters.**
- § Type **root** in the **Admin** field.
- § The **Admin password** field must be empty.

If you install Bitrix Intranet Portal on a remote server, consult the hosting service provider for the database parameters. Specifically, you should obtain values for the following fields:

- § **Server address;**
- § **Database user:** consult whether you need to create a new database user;
- § (database) **User name;**
- § (database) **Password;**

- § **Database:** consult whether you need to create a new database;
- § **Database name;**
- § Type of database tables.

Attention! If you need to create a new database user or a new database, the database user name and password fields are required. If no database exists yet, you must create a new one (by selecting the appropriate option). However, new databases are usually created by the hosting service techsupport. You will only have to obtain the user name, password and connection parameters.

Oracle database parameters

Fill in the following fields:

- § **Connection string:** this field should contain either the name of a local Oracle instance, or the record name in **tnsnames.ora** to connect to. Example of the name of a local Oracle instance:

```
(DESCRIPTION = (ADDRESS_LIST = (ADDRESS = (PROTOCOL = TCP)(HOST = 000.000.0.00)(PORT = 0000)))(CONNECT_DATA = (SERVICE_NAME = BX))).
```
- § **Database user:** if checked, a new database user will be created. Otherwise, an existing user will be used.
- § **User:** a user name (login) of the database user used to access the database.
- § **Password:** a user password to access the database.

Attention! If you choose to create a new database or database user, you will have to provide the database administrator's login and password. The database administrator's user name and password are used only at the installation and database creation time. This information is not stored in the system.

MSSQL database parameters

Database settings	
* DSN:	<input type="text"/> For example: DRIVER=SQL Native Client; SERVER=BX
Create user to connect to database	<input checked="" type="radio"/> Existing user <input type="radio"/> New user
* User name:	<input type="text"/> Login to connect to database
Password:	<input type="text"/> Password to connect to database
Create database:	<input checked="" type="radio"/> Existing <input type="radio"/> New
*Existing database:	<input type="text" value="sitemanager"/> Database name where Bitrix will be installed

Fig. 1.8 MSSQL configuration parameters

Fill in the following fields:

- § **DSN:** a database connection string. The string should contain, at least, the connection driver parameters and the server name. Optionally, you can include the user name, password or other parameters.

Attention! Sometimes you would need to specify a user DSN name here (a connection must be created in advance).
 For local servers (if the product is installed on the same server as the database), this parameters usually has a value of **localhost**;

- § **Database user:** if checked, a new database user will be created. Otherwise, an existing user will be used.
- § **User:** a user name (login) used to access the database.
- § **Password:** a user password to access the database.
- § **Create database:** check this option if you want to create a new database.
- § **Database name:** type the name of the database to which the system will be installed.

Attention! If you choose to create a new database or database user, you will have to provide the database administrator's login and password. The database administrator's user name and password are used only at the installation and database creation time. This information is not stored in the system.

Additional parameters

These parameters define permissions to assign to all files and folder of the site. They are common to all database types.

Additional parameters	
File access permissions:	<input type="text" value="0644"/> Enter permissions enough for write access to server files
Folder access permissions:	<input type="text" value="0755"/> Enter permissions enough for write access to server folders

Fig. 1.9 Additional configuration parameters

Fill in the following fields:

- § **Access permission for site files:** Permissions that will be applied to all newly created files. Access permissions should allow the web server to write to files. The default value is **0644**;
- § **Access permission for site folders:** Permissions that will be applied to the newly created folders. Access permissions should allow the web server to write to folders. The default value is **0755**.

Attention: you can alter the database connection parameters manually by editing the file **/bitrix/php_interface/dbconn.php** which is created upon installation.

q Click **Next** to continue.

Step 6. Installing the System

At this stage, the wizard creates the database and copies the system files. You can watch the process proceeding in the progress bar. Upon completion, the wizard will switch to the next step automatically.

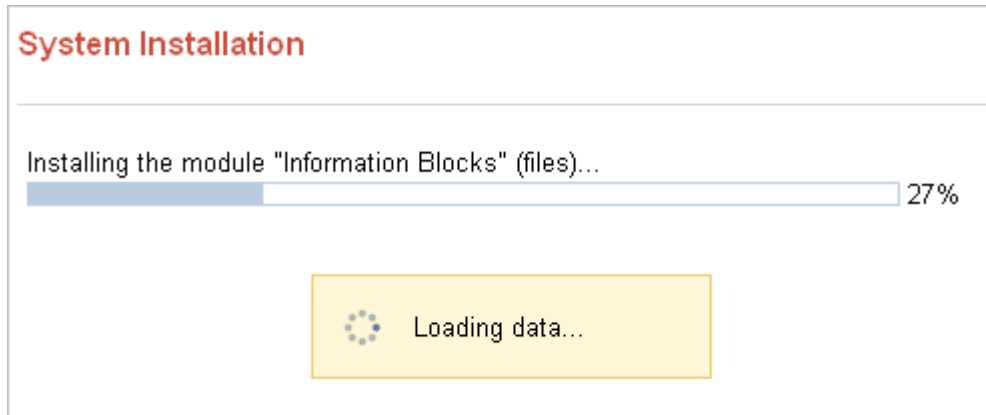


Fig. 1.10 Installation process

Step 7. Creating an Administrator's Account

Here you will configure the web site and create a web site administrator's account. The administrator's account provides full access to web site management and configuration. After the installation is complete, you can create more users with less permissions.

Site administrator settings	
* Login (min. 3 characters):	<input type="text" value="admin"/>
* Password (min. 6 characters):	<input type="password" value="●●●●●●"/>
* Confirm password:	<input type="password" value="●●●●●●"/>
* E-mail:	<input type="text" value="admin@email.com"/>
Name:	<input type="text" value="Administrator"/>
Last name:	<input type="text"/>

Fig. 1.11 Creating the administrator's account

Note: fields marked with asterisk (*) are required.

Fill in the following fields:

- § **Login:** the site administrator login to access the Control Panel pages. Must contain at least 3 symbols;
- § **Password:** the site administrator password. Must contain at least 6 symbols;
- § **Confirm password:** type the password again to validate it.
- § **E-Mail:** the address of the site administrator's e-mail account;
- § **Name, Last name:** the real name of the site administrator.

Attention: You will use the provided password and login to authorize in Control Panel.

- q Click **Next** to continue installation. The **Intranet Portal Configuration Wizard** will open.

The Intranet Portal Configuration Wizard

Step 1. Initial screen

This screen informs you that the configuration wizard has started.




Bitrix Intranet Portal 9.0 Configuration

Configuration Wizard

This wizard will help you configure your portal in simple six steps, and start working with content.

You will have to choose the portal design, color theme and provide the initial settings.

Next →



Copyright © 2001-2010 Bitrix, Inc. www.bitrixsoft.com | [Techsupport](#)

Fig. 1.12 Running the Intranet Portal Configuration Wizard

q Here, just click **Next**.

Step 2. The Portal Design

Choose the design template for your portal. Templates vary in layout, colour, appearance of the main page and settings.



Bitrix Intranet Portal 9.0 Configuration

Portal Design

1 Configuration Wizard

2 Portal Design

3 Color Theme

4 Portal Settings

5 Data Installation

6 Finishing Configuration

Modern template

Classic template

Bright template

[← Back](#) [Next →](#)

BITRIX

Copyright © 2001-2010 Bitrix, Inc. www.bitrixsoft.com | [Techsupport](#)

Fig. 1.13 Choosing a portal design template

- q Select a desired template by ticking a respective radio button.
- q Click **Next**.

Step 3. Colour Theme

Here you will choose the desired colour theme for your portal. Different site design templates offer different colour schemes.



Bitrix Intranet Portal 9.0 Configuration

Color Theme

1 Configuration Wizard

2 Portal Design

3 Color Theme

4 Portal Settings

5 Data Installation

6 Finishing Configuration

Red
Red Theme

Green
Green Theme

Blue
Blue Theme

← Back Next →

BITRIX

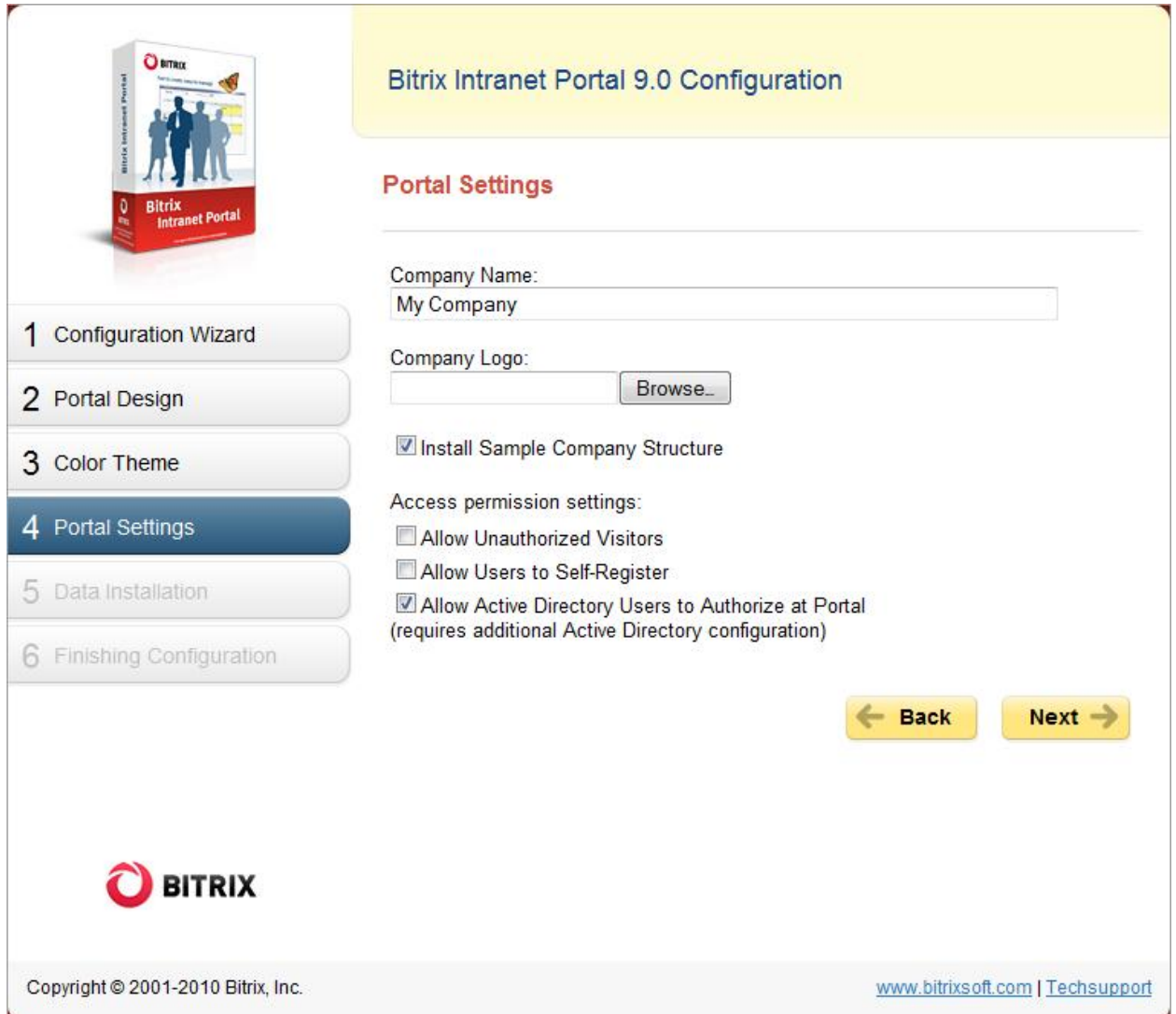
Copyright © 2001-2010 Bitrix, Inc. www.bitrixsoft.com | [Techsupport](#)

Fig. 1.14 Choosing a portal color theme

q Choose the desired color theme and click **Next**.

Step 4. Portal Settings

Provide here the name and the logo of your company. Select the features you want to enable on your portal.



Bitrix Intranet Portal 9.0 Configuration

Portal Settings

1 Configuration Wizard

2 Portal Design

3 Color Theme

4 Portal Settings

5 Data Installation

6 Finishing Configuration

Company Name:
My Company

Company Logo:


Install Sample Company Structure

Access permission settings:

Allow Unauthorized Visitors

Allow Users to Self-Register

Allow Active Directory Users to Authorize at Portal
(requires additional Active Directory configuration)



Copyright © 2001-2010 Bitrix, Inc. www.bitrixsoft.com | [Techsupport](#)

Fig. 1.15 Portal settings

- q Type the name of your company.
- q Click **Browse** to select the logo image of your company.

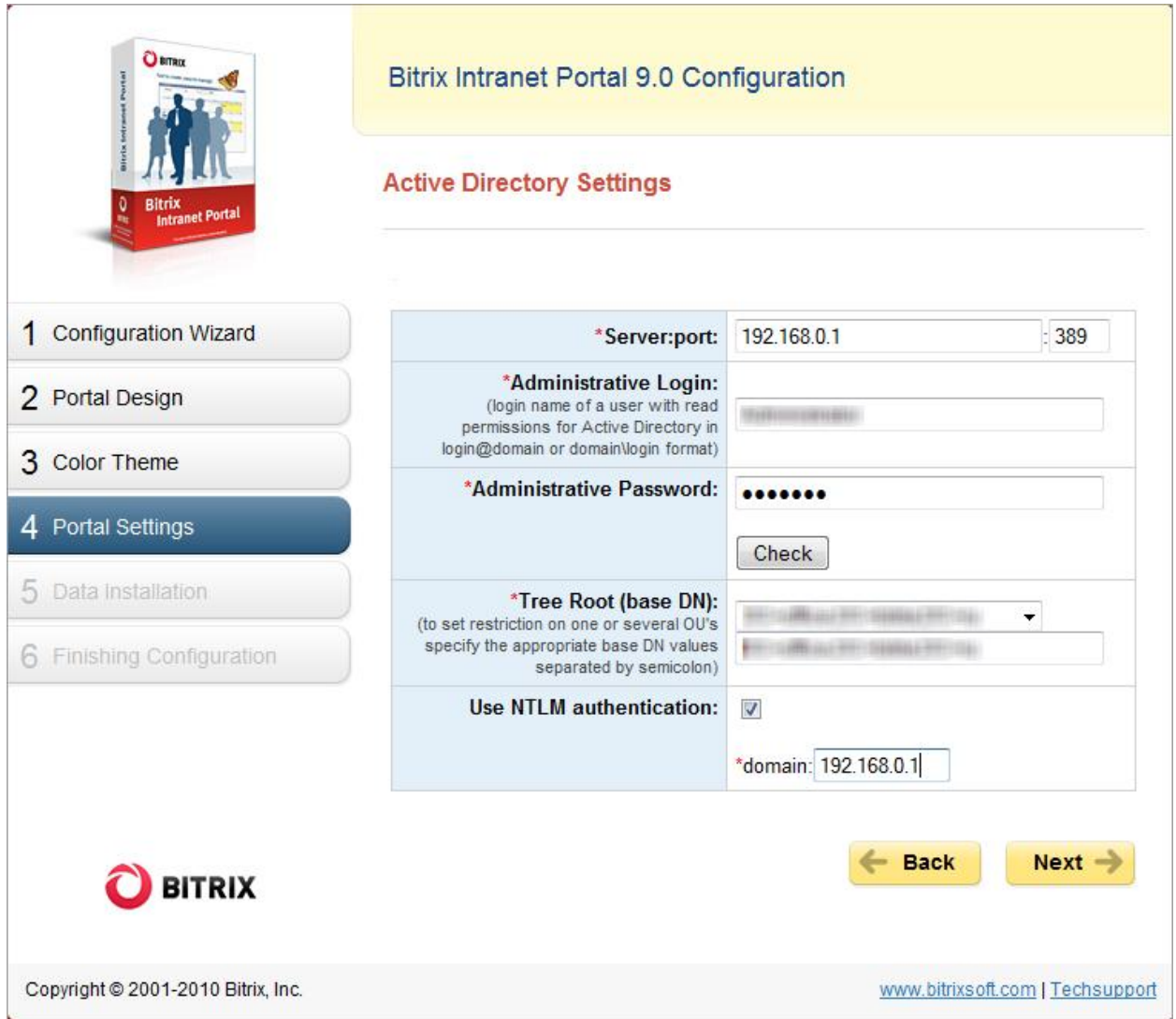
Note! The logo image file must not exceed 1.5 MB. The following file formats are supported: GIF, JPG, PNG.

- q Tick the option **Allow Unauthorized Visitors** if you want to allow any visitor, authorized or unauthorized, to view the portal pages.
- q If you need to let your users register at the portal without your permission, enable the option **Allow Users to Self-Register**.

- q Be sure to leave the option **Install Sample Company Structure** checked if you install the system for evaluation purposes.
- q If you have a properly installed and configured **AD** server, you can enable users stored in it to authorize at your portal – just leave the option **Allow Active Directory Users to Authorize at Portal** checked. If so, you will have to configure the Active Directory settings after you click **Next**; otherwise you will see the step 5 of the wizard.
- q Click **Next** to go to the next step.

Active Directory Configuration

This screen is active if you have left the option **Allow Active Directory Users to Authorize at Portal** enabled.



1 Configuration Wizard

2 Portal Design

3 Color Theme

4 Portal Settings

5 Data Installation

6 Finishing Configuration

Active Directory Settings

*Server:port:	192.168.0.1	: 389
*Administrative Login: <small>(login name of a user with read permissions for Active Directory in login@domain or domain\login format)</small>	<input type="text" value="REDACTED"/>	
*Administrative Password:	<input type="password" value="REDACTED"/>	
	<input type="button" value="Check"/>	
*Tree Root (base DN): <small>(to set restriction on one or several OU's specify the appropriate base DN values separated by semicolon)</small>	<input type="text" value="REDACTED"/> <input type="text" value="REDACTED"/>	
Use NTLM authentication:	<input checked="" type="checkbox"/>	
	*domain: <input type="text" value="192.168.0.1"/>	

Copyright © 2001-2010 Bitrix, Inc.
www.bitrixsoft.com | [Techsupport](#)

Fig. 1.16 Active Directory settings

Fill in the fields:

- § **Server:port** – the address and the port of the AD database server (389 is the default AD server port).
- § **Administrative Login** and **Administrative Password** – the login and password allowing for administrative access to the server.

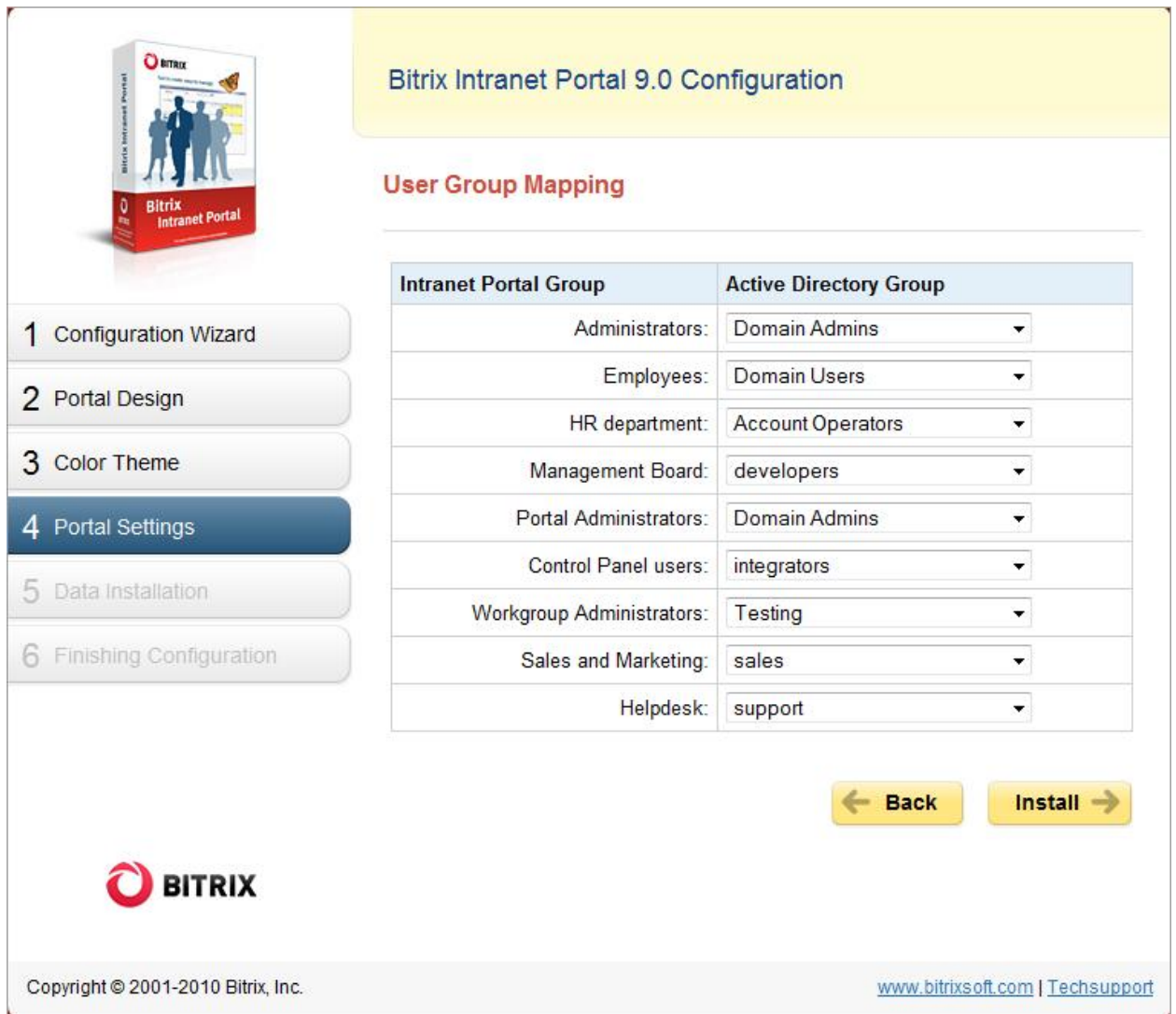
Click **Check** to establish a trial connection.

If the trial connection is successful, the server will return a list of available tree roots. Otherwise, you will see the error description text printed in red.

- § **Tree Root (base DN)** – the root of the catalog tree in which the user account look-up will be performed.
- § **Use NTLM authentication** – the domain at which the NTLM authorization will be performed (your **Apache** server must have the **mod_auth_sspi** module installed).

q Click **Next**.

Finally, you will have to match the portal user groups to the AD user groups.



The screenshot shows the 'User Group Mapping' configuration screen for Bitrix Intranet Portal 9.0. On the left is a vertical navigation menu with six steps: 1 Configuration Wizard, 2 Portal Design, 3 Color Theme, 4 Portal Settings (highlighted), 5 Data Installation, and 6 Finishing Configuration. The main area features a yellow header with the title 'Bitrix Intranet Portal 9.0 Configuration' and a sub-header 'User Group Mapping'. Below this is a table mapping Intranet Portal Groups to Active Directory Groups. At the bottom right are 'Back' and 'Install' buttons. The footer contains the Bitrix logo, copyright information (© 2001-2010 Bitrix, Inc.), and a link to 'www.bitrixsoft.com | Techsupport'.

Intranet Portal Group	Active Directory Group
Administrators:	Domain Admins
Employees:	Domain Users
HR department:	Account Operators
Management Board:	developers
Portal Administrators:	Domain Admins
Control Panel users:	integrators
Workgroup Administrators:	Testing
Sales and Marketing:	sales
Helpdesk:	support

Fig. 1.17 Configuring the user group mapping

- q Assign the **AD** groups the specified portal groups.
- q Click **Install** to proceed to the next step.

Step 5. Data Installation

This is an unattended step that installs the portal according to the selected preferences.

You can watch the site installation process in the progress bar. Upon completion the wizard will open the next step automatically.

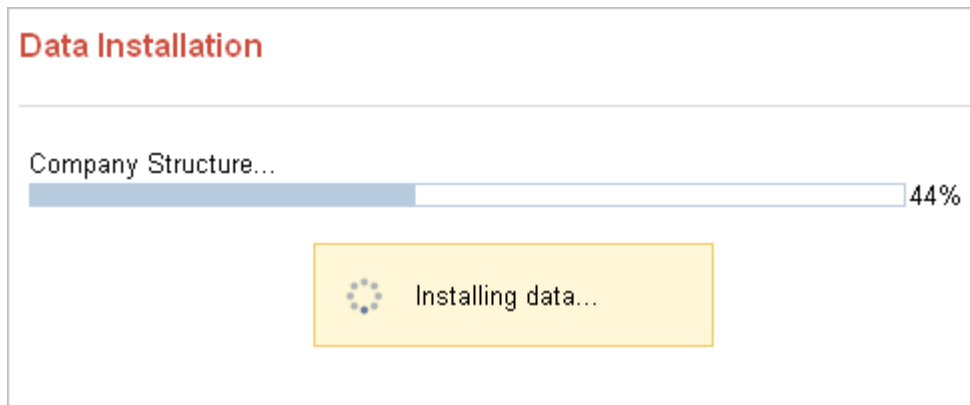
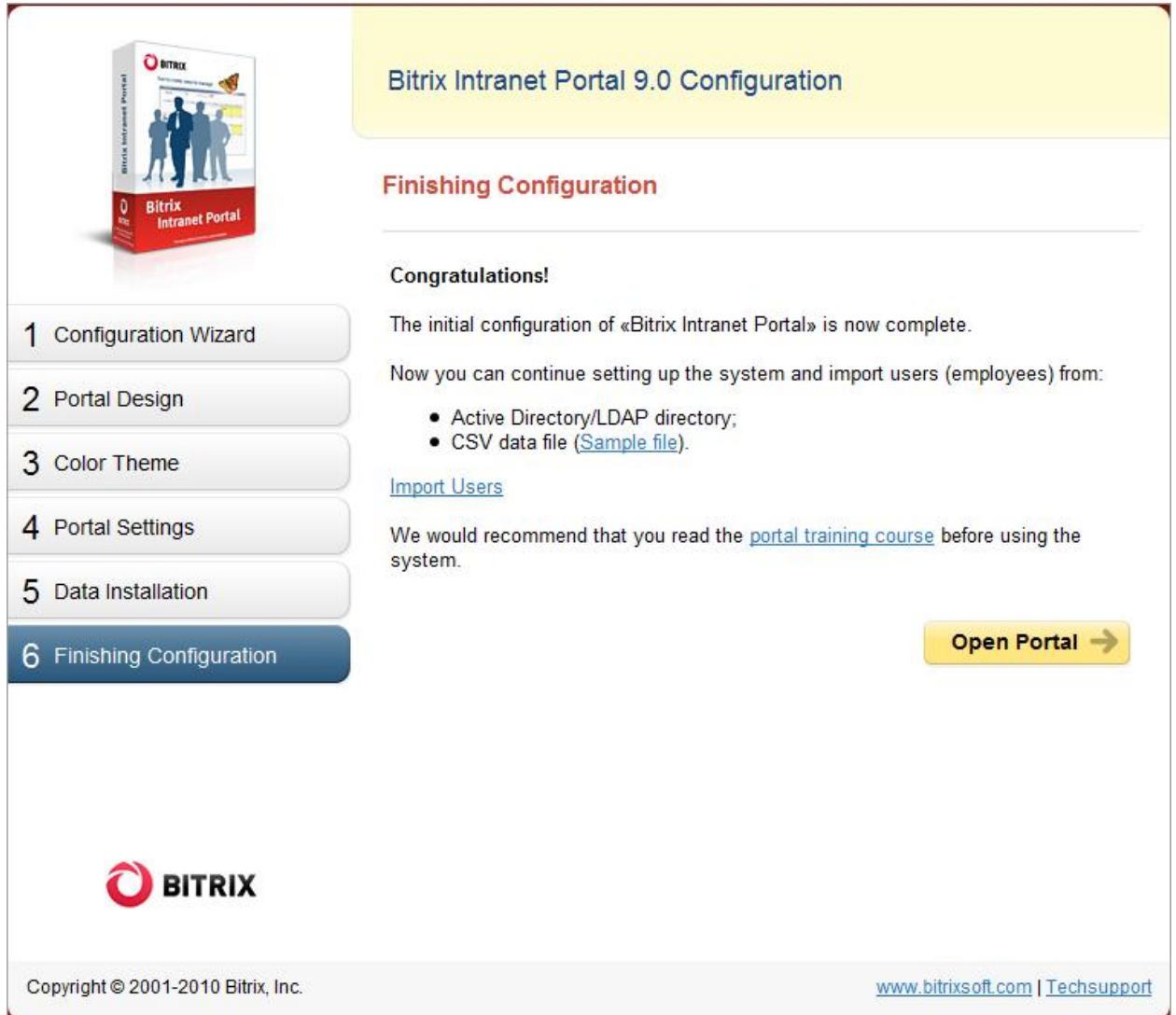


Fig. 1.18 The portal installation process

Step 6. Finishing Configuration

The system has been installed and the initial configuration has been applied.



Bitrix Intranet Portal 9.0 Configuration

Finishing Configuration

Congratulations!

The initial configuration of «Bitrix Intranet Portal» is now complete.


Now you can continue setting up the system and import users (employees) from:

- Active Directory/LDAP directory;
- CSV data file ([Sample file](#)).

[Import Users](#)

We would recommend that you read the [portal training course](#) before using the system.

Open Portal →



Copyright © 2001-2010 Bitrix, Inc. www.bitrixsoft.com | [Techsupport](#)

Fig. 1.19 The last wizard screen

Note: you can always run the wizard later by selecting *Settings -> System Settings -> Wizards*.

Now you can:

- § Import users to your portal (click **Import Users**).
- § Open the portal index page (by clicking **Open Portal**), or read the portal management course.

Chapter 2. Installation Using Windows Installer

The system exists in the two Windows installer versions:

- § the trial one (encoded **intranet_portal_encode_php5.exe**);
and
- § the commercial version (**intranet_portal_source.exe**).

Your system should meet the following minimum requirements to install and run Bitrix Intranet Portal:

- § Windows 98/ME/NT/2000/XP/2003/Vista/2008 Server;
- § 110 Mb of free disk space;
- § Internet connection if you install using Bitrix Environment package.

Setup Operations

- q Download the required version at
<http://www.bitrixsoft.com/download/intranet/index.php#tab-local-link> or
<http://www.bitrixsoft.com/download/sources.php>.
- q Run the downloaded file. The initial screen of the installation wizard will open.

The **installation wizard** will help you install the system taking as less time and efforts as possible. It will:

- § If required, download and install Bitrix Web Environment;
- § Install Bitrix Intranet Portal.

Use the **Next** and **Back** buttons to navigate through the wizard steps. The **Back** button allows you to return to a previous step if you need to change the installation preferences. If you want to abort the installation, click **Cancel**.

Step 1. The Initial Installation Screen

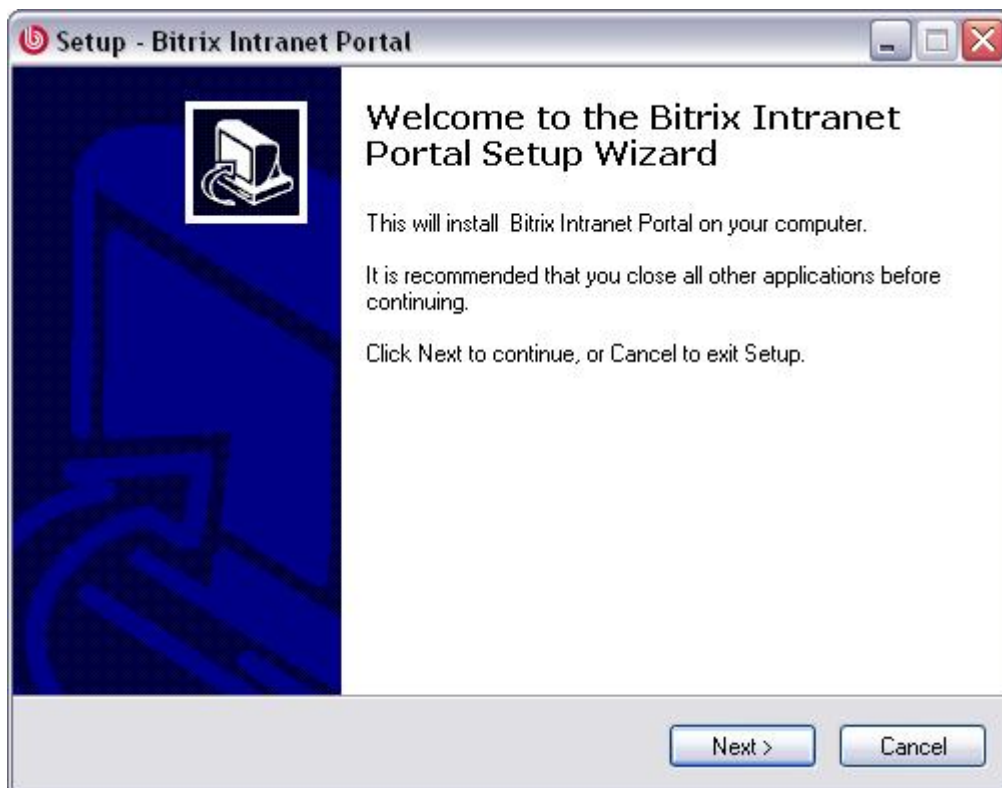


Fig. 2.1 The first step of the installation wizard

The first wizard window informs you that the installation is starting and displays the basic information about the product.

- Click **Next**. This will open the next step containing the Bitrix Intranet Portal License Agreement.

Step 2. The License Agreement



Fig. 2.2 The License Agreement

Read the Agreement carefully. If you accept the license terms, check the **I accept the agreement** option. You must accept the License Agreement to continue installation.

- q Click **Next** to open the next window of the Wizard.

Step 3. Bitrix Environment and Encoding



Fig. 2.3 Setting up Bitrix Environment

If you do not have Bitrix Environment installed on your machine, do the following:

- q Enable the **Download and install Bitrix Environment** option.

This will download and run **bitrix_env.exe**, the Bitrix Environment package (see Installing Bitrix Web Environment) which will install all the required third-party software: **MySQL 5.0.51**, **Apache 2.2.8**, **PHP 5.2.6**, **ZendOptimizer 3.3.0**, **eAccelerator 0.9.5**.

Important! If you refuse to install Bitrix Environment, the wizard will proceed to the destination folder selection step. In this case, you will have to install all the required software manually. However, if, having installed Bitrix Intranet Portal you find that you cannot install these applications without assistance, simply run the Wizard again.

- q If you plan to use multiple languages on your site, enable UTF-8 encoding.
- q Click **Next**.

If you have previously installed Bitrix Environment package, uncheck the **Download and install Bitrix Environment** option.

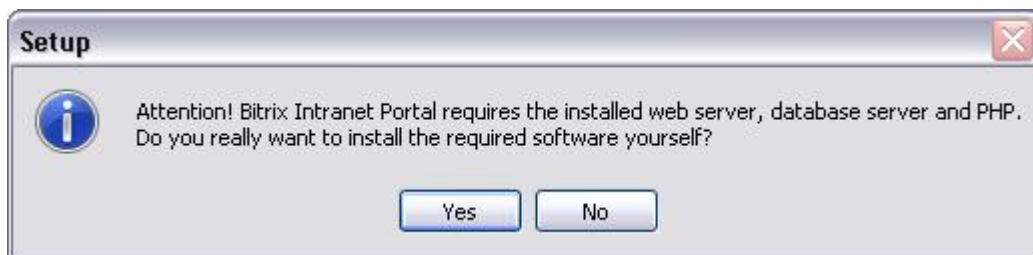


Fig. 2.4 Bitrix Environment installation warning

- q Confirm cancellation. The next screen will show.

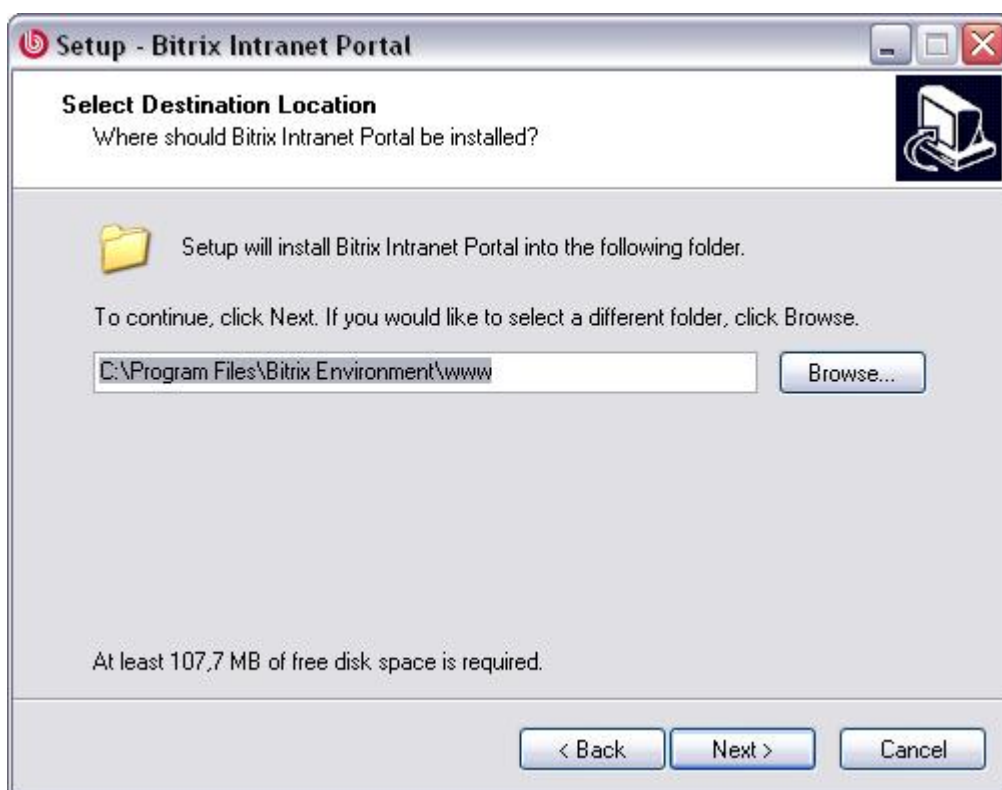


Fig. 2.5 Destination folder selection

- q Specify the folder in which the Bitrix Intranet Portal files will be unpacked and click **Next**.



Fig. 2.6 The installation confirmation window

Review all settings. At this step, you still can change them if required by clicking **Back**.

q If you confirm these preferences, click **Install**. The step 5 will follow.

Step 4. Confirm Installation

This window displays a summary of the installation preferences you have specified in the previous steps. Click **Back** if you need to change settings.



Fig. 2.7 The installation confirmation window

Review all settings. At this step, you still can change them if required by clicking **Back**.

□ If you confirm these preferences, click **Install**.

If you have chosen to download and install Bitrix Environment, the web environment installation wizard will start (see [Installing Bitrix Web Environment](#)). When it completes, the step 5 will follow.

Step 5. Copying Files

The installation of Bitrix Intranet Portal is now starting.

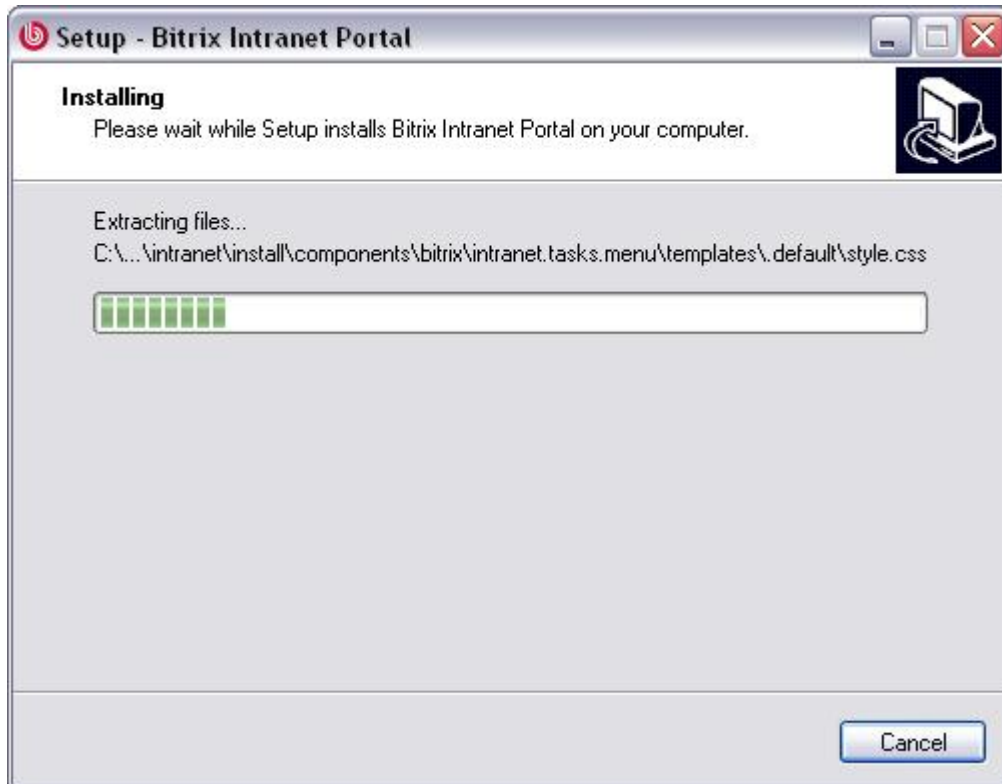


Fig. 2.8 Installing Intranet Portal

When the installation completes, the last window will open notifying that all the files have been copied successfully.

Step 6. Final Step

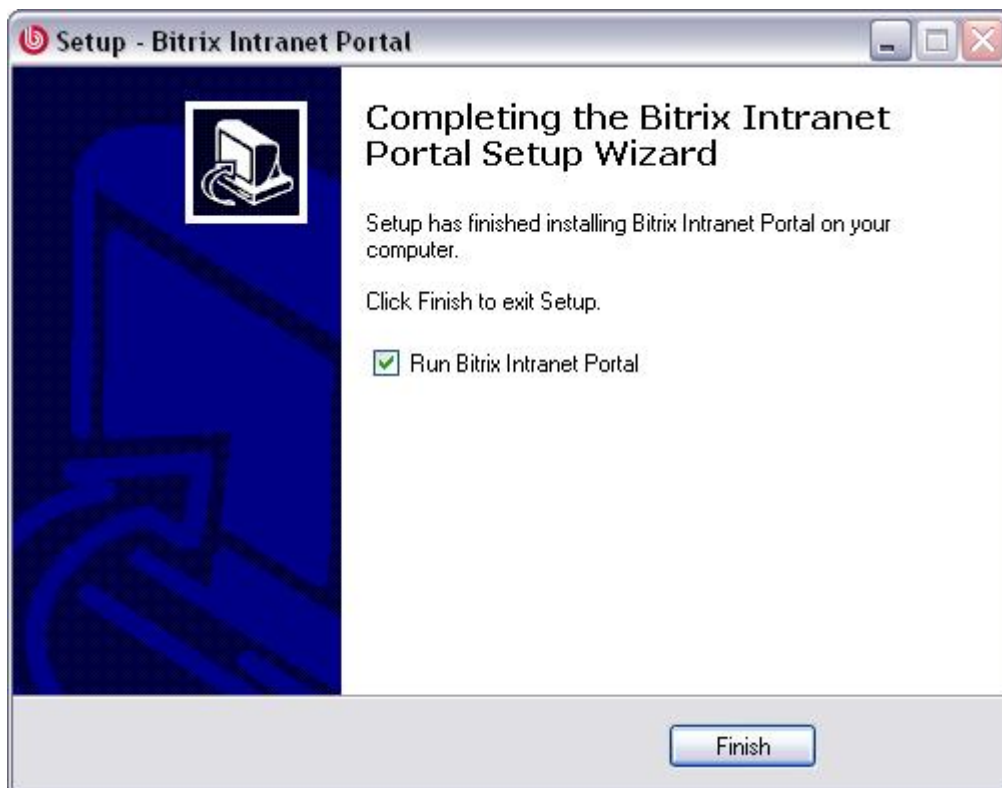


Fig. 2.9 The final step of the installation

This window informs that Bitrix Intranet Portal files have been successfully copied to your machine.

- q To run Bitrix Intranet Portal right after closing the installation wizard, enable the **Run Bitrix Intranet Portal** option.
- q Click **Finish** to quit the wizard.

Running Bitrix Intranet Portal

The First Run

When the system is starting, it opens a browser window in which you will continue the installation and configuration of Bitrix Intranet Portal.



If you have installed the system on an existing web environment, the first step of the Intranet Portal *installation* wizard will open. A *configuration* wizard will follow when the installation wizard completes.

If you have chosen to install the system with Bitrix Web Environment, the number of additional steps depends on the downloaded version:

- § the trial version (**intranet_portal_encode_php5.exe**) includes 2 steps. The first step is identical to [Installing the System](#) step, and the second one - to [Creating an Administrator's Account](#) step. Then, the [Intranet Portal Configuration Wizard](#) will start;
- § the commercial version (**intranet_portal_source.exe**) includes 3 steps: the first one is providing the license key; others are similar to those of the trial version.

Subsequent Runs

You can run Bitrix Intranet Portal:

- § by activating the shortcut  on the Desktop (if you have chosen to create it);
- § using the Start menu (*Start -> Programs -> Bitrix Web Environment ->  Bitrix Web Environment*);
- § by running **BitrixEnv.exe** located in the system installation folder (e.g. *C:\Program Files\Bitrix Environment*)

Using the Taskbar Icon

After the system has been launched, the Bitrix Web Environment icon becomes visible in the system tray.

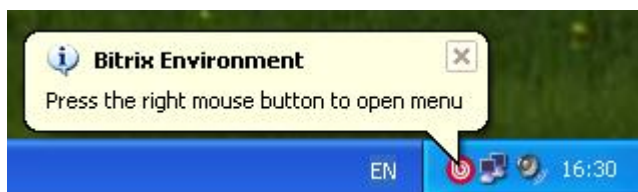


Fig. 2.10 The taskbar icon

When visible, this icon indicates that all the applications required by the system are up and running. You can now start working with Bitrix Intranet Portal.

q Right-click on the icon to bring up the context menu.

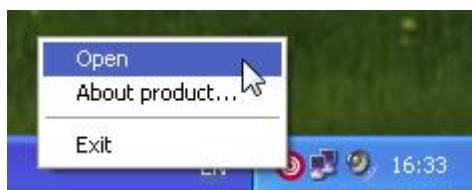


Fig. 2.11 The context menu

The menu includes the following commands:

- § **Open:** opens the public section (i.e. the index page visible to visitors) of the site in your browser;
- § **About product:** navigates to the **Bitrix** company site;
- § **Exit:** closes all the applications required by Bitrix Intranet Portal (web server, database etc.).

Chapter 3. Installing Bitrix Web Environment

The Bitrix Web Environment package is extremely useful for testing the trial versions of Bitrix Intranet Portal. The Bitrix Web Environment installation wizard deploys the following applications required by the system:

- § MySQL 5.0.51
- § Apache 2.2.8
- § PHP 5.2.6
- § ZendOptimizer 3.3.0
- § eAccselerator 0.9.5

Preliminary Operations

Do the following to download Bitrix Web Environment:

- q Open <http://www.bitrixsoft.com/download/intranet/index.php#tab-env-link> in your browser (the download page).
- q Click Download.

Bitrix Environment package	.exe
Version: 1.1 Installation time: max. 5 minutes.	12 Mb Download

Fig. 3.1 Bitrix Web Environment download page

- q Click **Save** in the file download dialog box.
- q Run the downloaded file. A Bitrix Web Environment installation wizard window will open.

The Bitrix Web Environment Installation Wizard

The installation of Bitrix Web Environment is very simple. It will not take more than 5 minutes.

Use the **Next** and **Back** buttons to navigate through the wizard steps. Note that the **Back** button allows you to return to a previous step if you need to change the installation preferences. If you want to abort the installation, click **Cancel**.

Step 1. The Initial Installation Screen



Fig. 3.2 The first step of the Bitrix Web Environment installation wizard

The first wizard window informs you that the installation is starting and displays the basic information about the product.

- q Click **Next**. This will open the next step containing the License Agreement.

Step 2. The License Agreement



Fig. 3.3 The License Agreement

Read the Agreement carefully. If you accept the license terms, check the **I accept the agreement** box. You must accept the License Agreement to continue installation.

- q Click Next to open the next window of the Wizard.

Step 3. Choosing Installation Folder



Fig. 3.4 Destination folder selection

- q Specify the folder to which the Bitrix Web Environment will be installed. The default destination directory is **\\Program Files\Bitrix Environment**. To choose a different folder, click **Browse** and select the folder in the tree, or type the path in the edit box.
- q Click **Next** to open the next screen.

Step 4. Shortcuts



Fig. 3.5 Start menu shortcuts

This window shows the name of a folder containing the application shortcuts that will be created in the **Start** menu. By default, the wizard suggests the folder **Bitrix Intranet Portal**. You can specify a different folder name.

q Click **Next** to go to the next step.

Step 5. More actions



Fig. 3.6 Additional setup tasks

- q Enable the **Create a desktop icon** option to place a shortcut to Bitrix Web Environment on your desktop.
- q Click **Next** to go to the next step.

Step 6. Web Server Parameters



Fig. 3.7 Web server parameters

Here you can change the port at which you will connect to the Apache web server.

By default, the web server is configured to respond at port 6448. You can set any other port number (e.g. 6443) unless this port is not in use by other applications (e.g. IIS).

q Click **Next** to continue.

Step 7. Ready to install



Fig. 3.8 The installation options review window

This window displays a summary of the installation preferences you have specified in the previous steps. If you need to change the installation preferences, click **Back**.

- q If you accept the proposed settings, click **Install** to start installation.

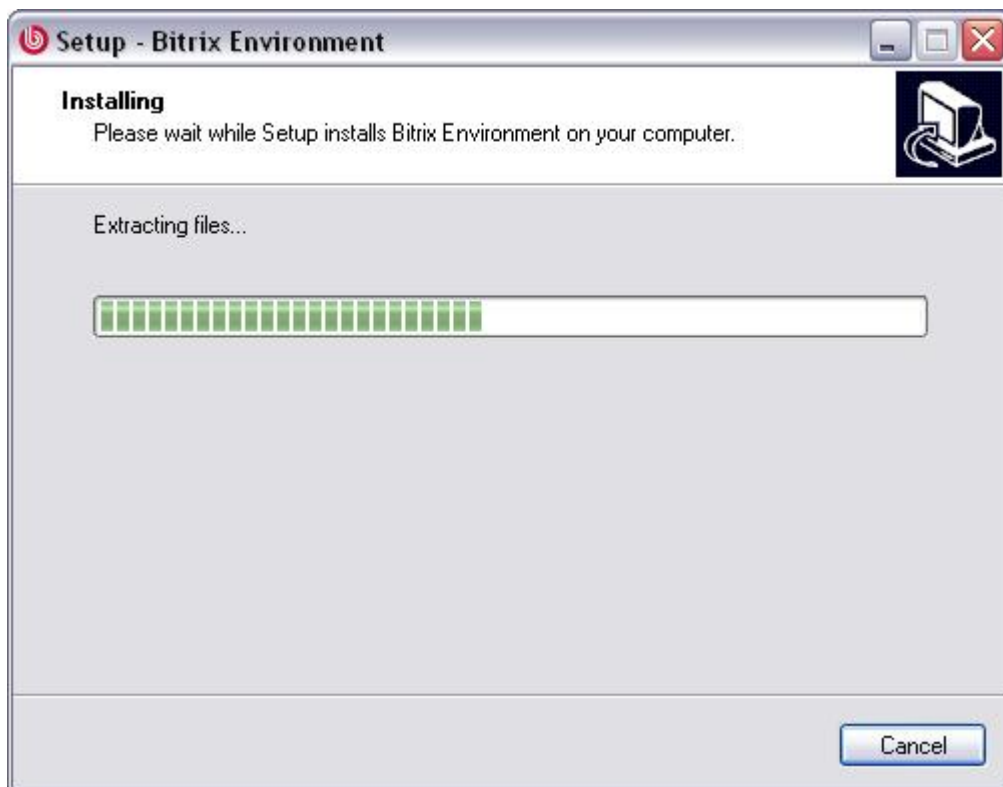


Fig. 3.9 Installing Bitrix Web Environment

Wait until the wizard copies files to your machine.

Step 8. Final Step



Fig. 3.10 The final step of the installation

This window informs that the Bitrix Web Environment files have been successfully copied to your machine. To run Bitrix Web Environment right after closing the installation wizard, enable the **Run Bitrix Web Environment** option.

- q Click **Finish** to quit the wizard.

Chapter 4. Side-by-side Installation of Bitrix Systems

If you need to install and run multiple instances of Bitrix Intranet Portal and/or Bitrix Site Manager, you can easily accomplish this using a single installation of Bitrix Web Environment.

- q Create a folder in **C:\Program Files\Bitrix Environment**. The folder can have any name.
- q Add the following lines to **httpd.conf** (in C:\Program Files\Bitrix Environment\apache\conf):

```
Listen 81
<VirtualHost *:81>
    ServerName localhost
    DocumentRoot "C:\Program Files\Bitrix Environment\folder_name"
</VirtualHost>
```

Here, 81 is the port number. The port must be specified twice: with the **listen** and **VirtualHost** directives. You can specify any vacant port number on the range 1 – 65535 to create a virtual host.

- q After you have finished the configuration, you will have to restart Bitrix Web Environment.

Note. You can copy files to the new folder even if Bitrix Web Environment is already running.

Attention! You can create as many sites or portals as required under this model. For each site, create an individual folder; add a record to **httpd.conf** specifying a unique port number.

Additionally, the following section in **httpd.conf** file should be changed:

```
<Directory>
    Options FollowSymLinks
    AllowOverride None
</Directory>
```

- q Replace **AllowOverride None** with **AllowOverride All**.

Now you can access your site at **http://localhost:81**. Use the port number you have specified in **httpd.conf**.

Chapter 5. Registration Procedure

Before you start using the commercial version, you have to activate your license key. If you install the trial version, you can omit registration yet it is recommended that you proceed to enable system updates during the trial period.

Registering a Commercial Version

Registration entitles you to obtain latest system updates and receive support from the Bitrix technical support service.

Moreover, having your commercial copy registered you can access the Bitrix private forum where users and Bitrix developers communicate and discuss important issues, resolve user's problems.

To register your copy:

- q Open Control Panel.
- q Click *Settings* -> *Update* to open the system update form.

Since your copy is not registered yet, you will see the following error message:

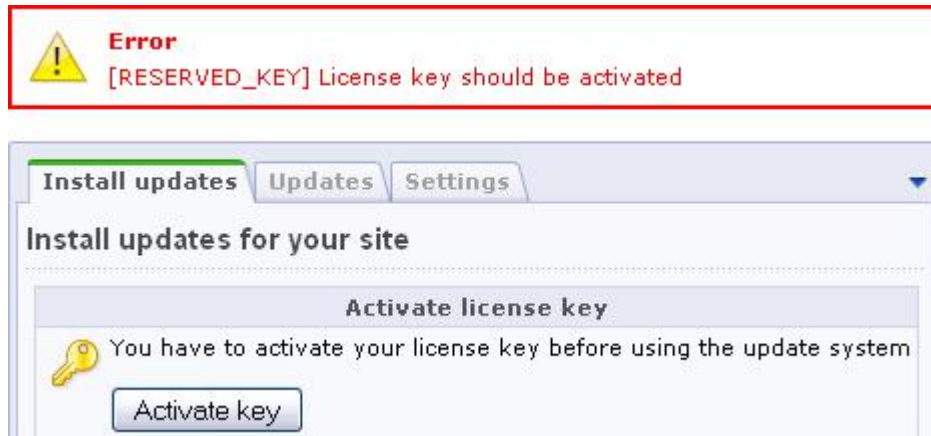


Fig. 5.1 License key activation message

Here, click **Activate Key**. The following form will open:

Activate license key
✕

Activate license key

*Key owner (company name or person):

*Site address:

*Phone number of the product copy owner:

*E-mail address for licensing and usage contacts:

*Contact person responsible for this product copy:

*E-mail address for technical contacts:

*Contact person phone:

Contact information:

If you are not registered at www.bitrixsoft.com, please ensure that the "Create user" option is checked, and enter your information (first and last names, login and password) in the form fields. Having registered at www.bitrixsoft.com enables you to use the [techsupport service](#) and the [private forum](#) to resolve your problems and get answers to your questions.

Create user at www.bitrixsoft.com

I already have a user account and want to use it to access Helpdesk and Download site sections;

*Login (at least 3 symbols):

Fig. 5.2 Activation form

Note: fields marked with asterisk (*) are required.

Fill in the following fields:

- § **Key owner (company name or person):** specify the name for which the registration key was issued. This can be a company or an individual person.
- § **Site address:** the addresses (URL's) of portals that will be controlled by the system with this license key.
- § **Phone number of the product copy owner:** the contact phone number including the country and the area codes.
- § **E-mail address for licensing and usage contacts:** this e-mail address will be used by the Bitrix company staff, if such contacts are required.
- § **Contact person responsible for this product copy:** specify here the full name of a contact person including salutation.
- § **E-mail address for technical contacts:** the e-mail address of a person who is in charge of the system maintenance and licensing;
- § **Contact person phone:** the phone number of the above mentioned person;
- § **Contact information:** any additional contact information you consider essential.
- § **Create user at www.bitrixsoft.com:** check this box if you have not registered at the Bitrix web site yet. If so, upon successful activation, you will be registered there with the provided personal information. Registration enables you to contact the techsupport service directly and post to the private forum.

§ **I already have a user account...**: if you are a registered user, select this option and specify your login.

q Click **Activate key**. Now the license is active; you can start using your site.

Registering a Trial Version (DEMO)

If you install the trial version, you will see the **License not found** message when opening the *Settings* -> *Update* page.

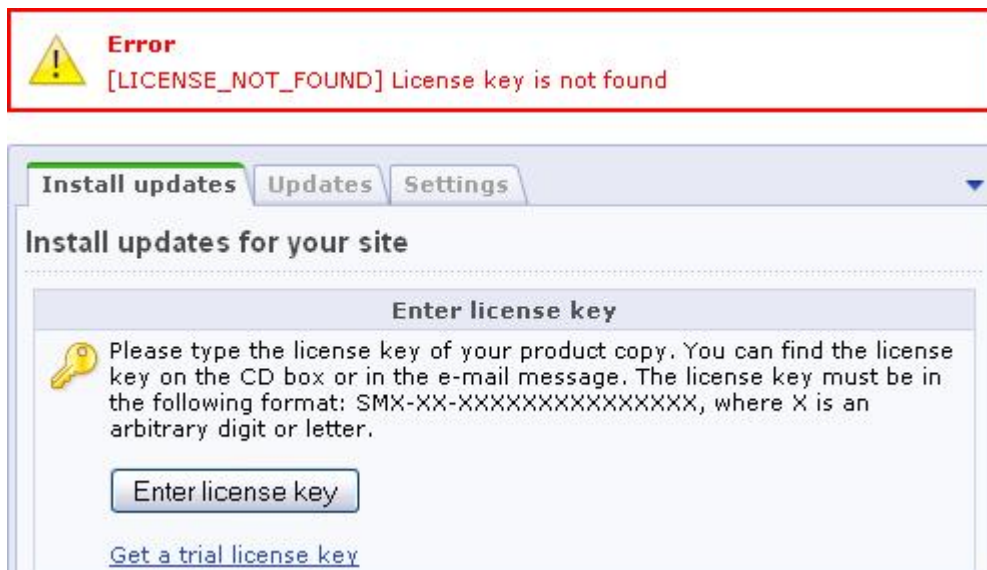


Fig. 5.3 The error notification and the trial key acquisition link

Essentially, a local trial version does not require that you obtain a license key. It only enables the system to receive updates. Obtaining a trial key requires that you register at the Bitrix web site.

q Click **Get a trial license key**. This will open the trial registration page at the Bitrix web site.

Fill in the form fields:

Registration of the Trial version

In order to get the trial registration key and activate the SiteUpdate system you need to fill in the registration form.

Last name*:

Name*:

Email*:

Company:

Phone:

Web-site*:
Correct site URL where the trial version is located

License type*: ▼

Database type*: ▼

Oracle XE / MS SQL Express:

Fig. 5.4 Registration of the trial version

- § **Last name, Name:** specify your last and first names;
- § **E-mail:** specify your e-mail address. This must be a valid address; the trial key will be sent to it;
- § **Company:** the company name;
- § **Phone:** the phone number;
- § **Web site:** specify the exact address of a site that runs the trial version of the system;
- § **License type:** select the version of the product you have just installed;
- § **Database type:** select the type of the database on which the system runs.

If you use free versions of Oracle XE / MS SQL Express, enable the **Oracle XE / MS SQL Express option**.

- q Complete the form and click **Send**. The system will inform you that your request is now put in the submission queue.

A message containing the license key and the period of validity will be sent to the address you have previously specified in the trial registration form. You can copy and paste this key in the Control Panel form where you clicked the **Get trial license key** link, or in the Kernel module settings page.

- q Open Control Panel.
- q Open the **Kernel** module settings page: *Settings -> System settings -> Module settings*.
- q Open the **Update System** tab.
- q Paste the key in the **License Key** field.

Now you can obtain updates during the 30-day trial period.

Registering a Trial Version Using a Commercial Key

After you have evaluated the trial version, you can register it again using a commercial license key. To get a commercial license key, you will need to purchase the Bitrix Intranet Portal license, enter the key in the **License key** field (*Settings -> System settings -> Module settings -> Kernel -> Update system*) and click **Apply**. Then, you will have to activate the key as described in **Registering a Commercial Version**. Upon successful registration, you can download source codes.

Chapter 6. The Update System

The system updates, like the technical support, are available within a year after the moment of registration of the purchased license. If you want to access these services after that period, you will have to renew your license.

Attention! If you use the system at a local machine, your computer must be connected to the Internet to receive updates.

Updating via Proxy Server

Bitrix Intranet Portal has an option allowing you to set up receiving updates via the proxy server. The only thing you have to do is specify the proxy server parameters at the Kernel module settings page (*Settings -> System settings -> Module settings -> Kernel -> Update system*).

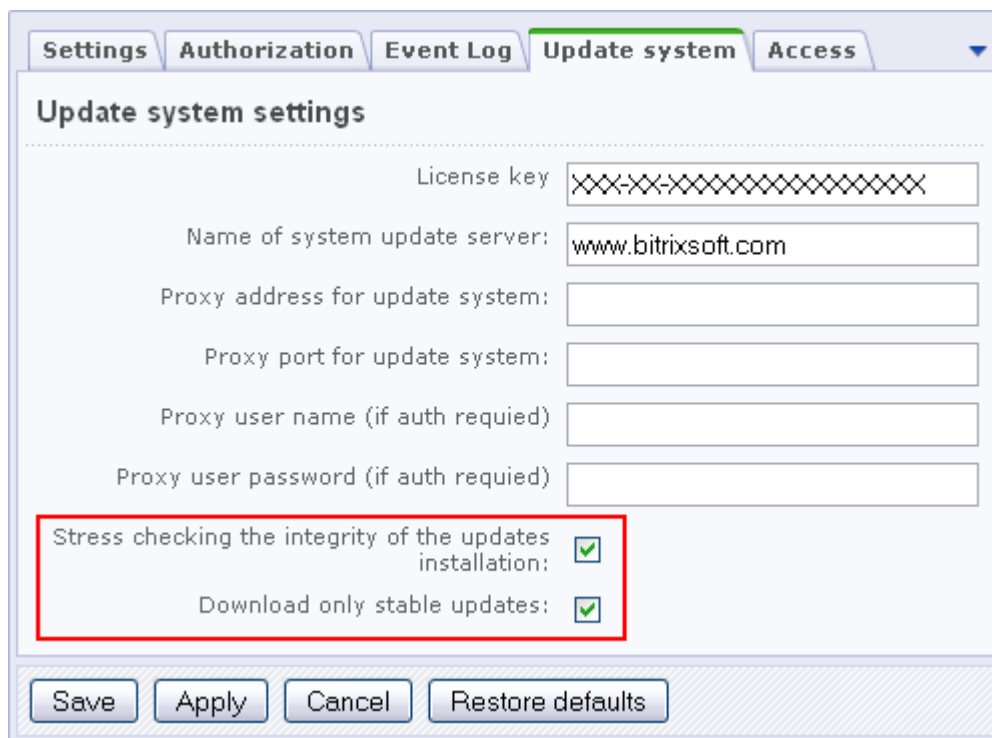


Fig. 6.1 Update system parameters

Example:


- § **Proxy address:** 192.168.0.14
- § **Proxy port:** 3128

Note the following two options.

- § **Check the integrity of update files.** Enabling this option gives makes copying the update files more safe. This function may slow down the update process but allows to get full information about each new file copied to your system.

- § **Download only stable updates.** Certain new modules or updates are available at beta testing stage. Changing this option is equivalent to clicking the **Allow beta versions / Allow only stable versions** link at the *Settings -> Update* page.

Downloading Updates

To download updates, open the update system page by clicking the button  on the **Control Panel** toolbar.

In the **Updates** tab, you can select the updates for further installation. Thus, you can install them in required order.

Important! If you encounter any module updates that are dependent on any other available updates, you must select all the required modules, or none.



Fig. 6.2 Stepwise update form

- q Click **Install recommended updates** to install the updates selected in the **Updates** tab.

Downloading Interface Language Files

You can install additional user interface languages.

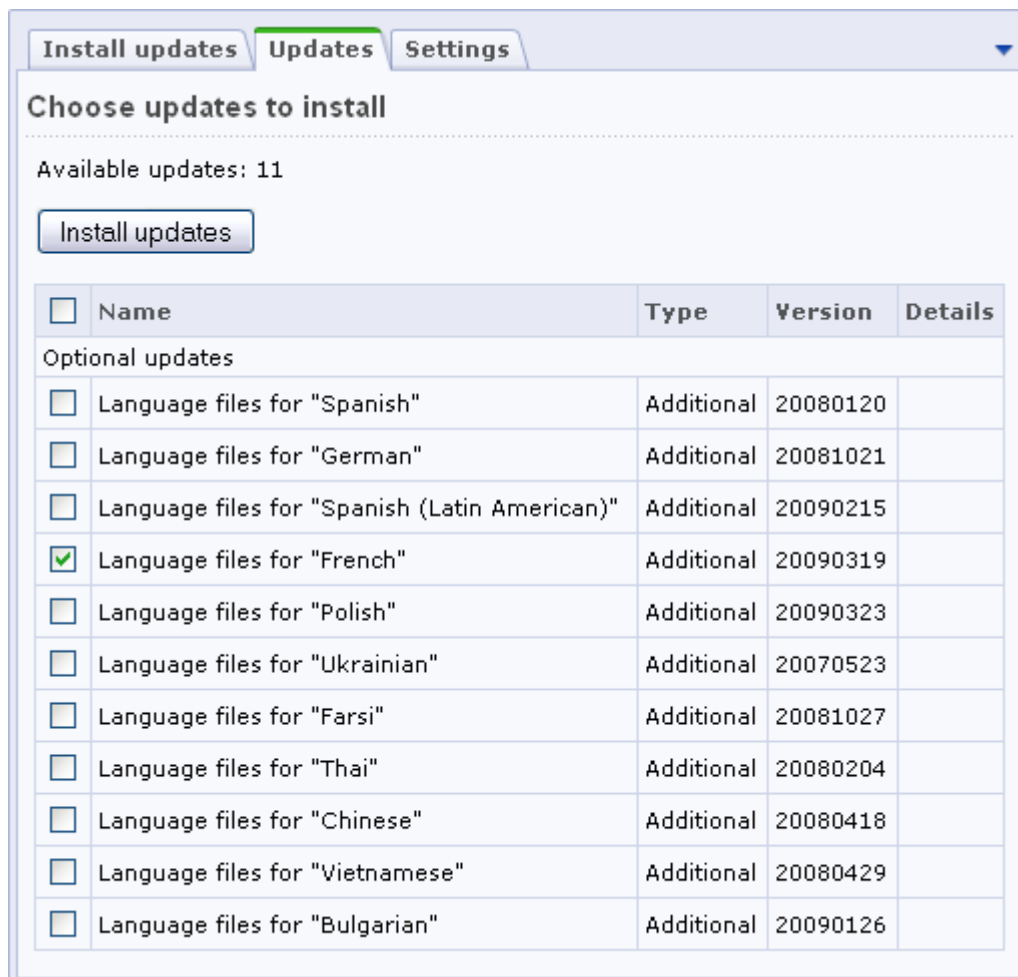


Fig. 6.3 Downloading interface languages files

Click the **Updates** tab.

- q Scroll to the **Optional updates** section, and select the required language and help files.
- q Click **Install Updates**.

Downloading Source Codes

After you have registered your product copy and updated the system to the latest version, you can download the source codes.



Fig. 6.4 Downloading source codes

- q Click the **Download source code** button. The system will download the source codes from the Bitrix server.

Now you have the fully functional product copy with the open source codes.

Note! If you install the full, open source code version and enter a commercial license key, the source code download feature will not be available because all source codes are already in the distribution package.

Chapter 7. Uninstalling Bitrix Intranet Portal

You can uninstall the Bitrix Intranet Portal by selecting one of the commands:

□ *Menu Start -> Settings -> Control panel -> Add/Remove Programs*

or

□ *Menu Start -> Programs -> Bitrix Web Environment -> Uninstall*

Removing Bitrix Intranet Portal from a local machine deletes the database files as well as all files and folders from the root folder of your web server.

Check that **../www** folder was removed from the Bitrix Environment folder as well.

Chapter 8. Additional Information

Web Server Configuration

By default, the Bitrix Web Environment web server sits at the port **6448**. However, you can change it to any other value on the stipulation that the new port is not in use by other applications (e.g. IIS).

The virtual web server settings can be changed by editing the file **bx_dir.conf**, which can be found in **\Program Files\Bitrix Environment\apache\conf**.

```
DocumentRoot "C:\Program Files\Bitrix Environment\www"  
ServerRoot "C:\Program Files\Bitrix Environment\Apache"  
Listen 6447
```

Zend Optimizer Verification

To ensure that **Zend Optimizer** is installed on the server and obtain its configuration, do the following.

§ Create a file **test.php**. Type the following directive in it:

```
<?phpinfo();?>
```

§ Save the file in the root folder of the site.

§ Open the file in your browser: <http://localhost/test.php>.

§ The browser will display a table similar to the following:

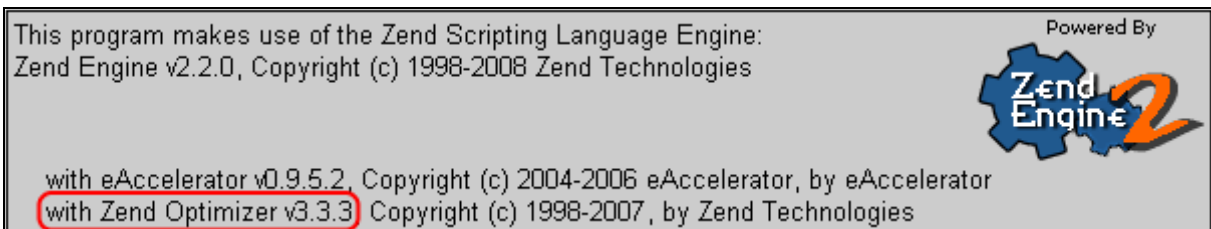


Fig. 8.1 Zend Optimizer verification result

A text framed in red border tells that **Zend Optimizer** is installed.

Zend Optimizer	
Optimization Pass 1	enabled
Optimization Pass 2	enabled
Optimization Pass 3	enabled
Optimization Pass 4	enabled
Optimization Pass 9	disabled
Zend Loader	enabled
License Path	<i>no value</i>
Obfuscation level	3

Fig. 8.2 Current settings of Zend Optimizer installed at a server

Note! For undisturbed operation, Bitrix Intranet Portal requires that Zend Optimizer version 2.6.x or higher is installed.

Creating and Unpacking tar.gz Archives

Creating an archive:

Method 1:

```
tar -zvcf <dirname>.tar.gz <dirname>/
```

Method 2:

```
tar -c dirname|gzip -c - > dirname.tar.gz
```

Unpacking an archive:

Method 1:

```
tar -zxvf file_name.tar.gz
```

Method 2:

```
gunzip file_name.tar.gz  
tar xf file_name
```

Troubleshooting Typical Installation Errors

Problem:

```
MySQL Query Error: .... [Out of memory restart server and try again (needed 65528 bytes)]
```

Solution:

Increase memory limit in the MySQL settings.

The recommended parameters to be specified in the MySQL configuration file (**my.cnf**) include the following:

```
key_buffer = 128K
max_allowed_packet = 16M
table_cache = 4
sort_buffer_size = 128K
read_buffer_size = 128K
read_rnd_buffer_size = 128K
net_buffer_length = 128K
thread_stack = 128K
```

You will have to restart MySQL after saving changes.

Possible Zend Optimizer Issues

Problem:

The following output is displayed after the site is transferred to a remote hosting:

```
Zend 2002062301116956658xщ ц2 Г'ZiоЫF s€*ўШ ".] tq†F$Ц Й bKI Ш-ў(мЪ `e%rШJўBR©УГ
Oэ:6ьgtmЪ Y:тЙ YefKQ пН ywdIt» ИЮwпо>сЯ с-Ыnpв>Ък{?Ючсч-††hЪ7M¶@к-Т† „Фгелциър
```

Solution:

Zend Optimizer is not installed. You should call your hosting techsupport service to solve this problem, or install it by yourself if possible.

After Zend Optimizer is installed, the corresponding notice will be displayed in the `phpinfo()` function report.

We recommend to use Zend Optimizer version 3.3.0 or higher.

Important! Only the trial version requires Zend Optimizer. The commercial version is shipped with full open source code and does not require it.

Problem:

The following error occurs:

```
Fatal error: Unable to read 63841 bytes in  
/disk2/clients/a1922/site.ru/htdocs/bitrix/modules/main/tools.php on line 0
```

Solution:

This error arises when running the encoded trial version. Files have been obviously transferred via the FTP in text mode. Files encoded with Zend Optimizer are binary so you have to ensure you transfer files in binary mode.